



Akshaya Building Solutions

German UPVC Windows & Doors



Stands for
High Performance



KÖMMERLING®

AKSHAYA

We, **Akshaya Building Solutions** - a reputed Manufacturer and Supplier of wide range of uPVC Doors, Windows and Office partitions, are appreciated in the market for our *Quality* and *Promptness*. Our Products are manufactured using KÖMMERLING (Germany) Profile which has the adaptability to fit all weather conditions.

We have a dedicated Team of Professionals trained by Germans. We have a latest State-of-Art Manufacturing Facility located at Somanur, Coimbatore (India), to cater to the requirements of our valuable Clients.

PROCESS

- Our Products are fabricated using Digital Cutting Machines and Latest Welding Techniques.
- CNC Corner Cleaning and Carbon Tipped Milling are adopted for superior finish.
- Customized products and services are delivered to ensure complete satisfaction.



ADVANCED TECHNOLOGY &
SUPERIOR QUALITY

PRODUCTS



Sliding Window
with or without Mosquito
Mesh,
(Arched or Straight line)



Casement Window
Arched or
Straight line



Patio door customized to your size
patio sliding doors are customized
as per given specifications
with or without mesh

KÖMMERLING®

More than just a window

Profine is the emphatic answer to the complex development of the international market for uPVC profiles. Under the brands KBE, **KÖMMERLING** and TROCAL, we produce uPVC profiles for windows and doors, shutters and façades as well as uPVC sheets.

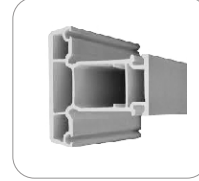
Profine GmbH -International Profile Group - was established in 2003, when HT TROPLAST consolidated its profile business activities under one roof. The profine company headquarters is in Troisdorf (North Rhine-Westphalia, Germany).

STRENGTH & CAPABILITIES

With a market share about 20%, our company is a world-wide leading supplier in its industry.

Profine has a total of 3,000 employees in 29 locations in 22 countries. Around 1,800 of these employees are in Germany.

A sales volume of about 700 million euros (consolidated) and a current production capacity about 450,000 tons annually of high-quality plastic profiles are convincing proof of our capabilities and the trust of our customers.



PRODUCTION

In Germany we have production sites in Berlin and Pirmasens.

Other production sites are located in:

- Vadodara, Gujarat, India
- Tianjin, China
- Marmoutier, France
- Bosaro, Italy
- Madrid, Spain
- Woskresensk and Chabarovsk, Russia
- Zaporozhie, Ukraine
- Huntsville, Alabama USA (sheets)



Casement with or without roll down mesh



Top hung & Side hung in one



Large 4-6 panel sliding doors made to customer's specifications



Casement openable @ 90°



KÖMMERLING® uPVC WINDOWS

Water Proof | UV Retardant | Thermal & Acoustic Insulator | Saves Energy upto 30%
Maintenance Free | Custom Designs | Long Life | No Need to Paint | Termite Proof

Address:

Door No :1/106A2, Sengattu Thottam, Sangothi Palayam,
Kaniyur (PO), Karumathampatti (VIA), Coimbatore – 641659.

Phone: 0421-2911949 **Mobile:** +91 98422 88867

Email: info@akshayaupvc.com, akshayaupvc@gmail.com

Web: www.akshayaupvc.com

Aswatha General Trading & Agencies,

CC 24/671, Unity Building, Willington Island,
Cochin - 682003.

Phone: 0484 4064450, 2391884

Email: aswathatraders@gmail.com